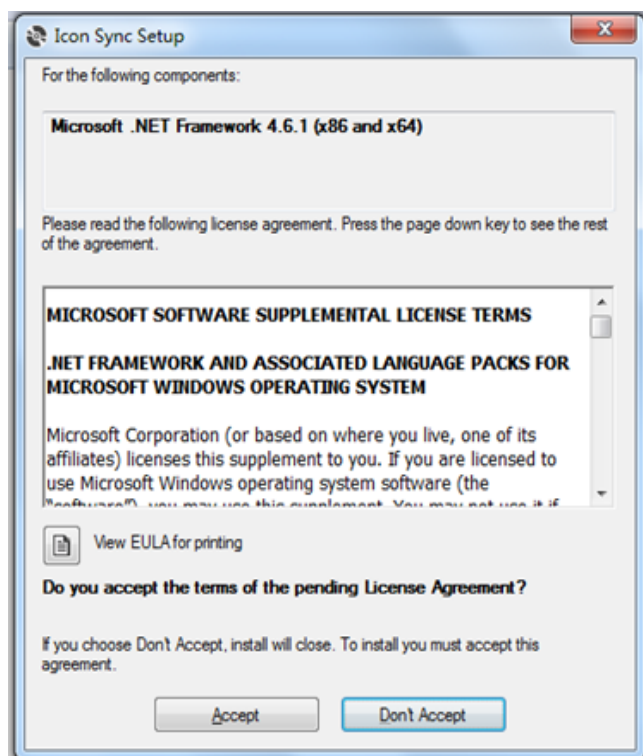


Icon Sync Win7 Installation:

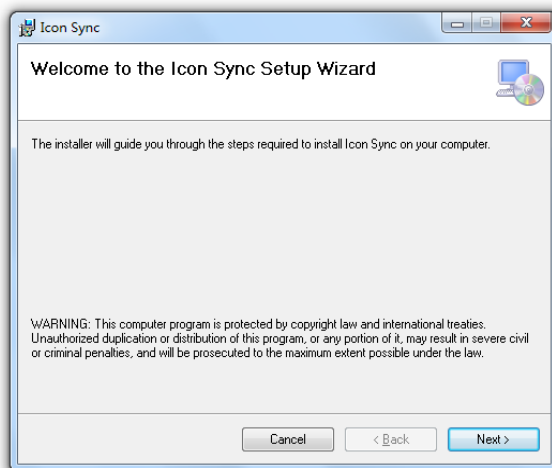
(1) Open "setup" file. Notice: If anti-virus software blocks during installation, select "Allow" to continue.



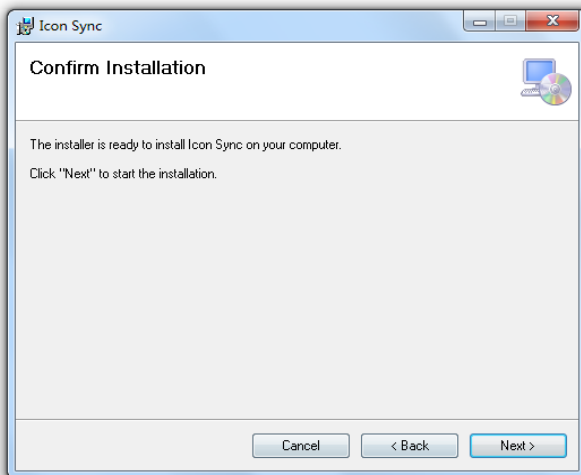
(2) If Win7 computer is installed "NET" software, it will skip this step and proceed to next step. If Win7 PC is not installed, click "Accept" to complete "NET" installation and proceed to next setup. Notice: If anti-virus software blocks during installation, select "Allow" to continue.



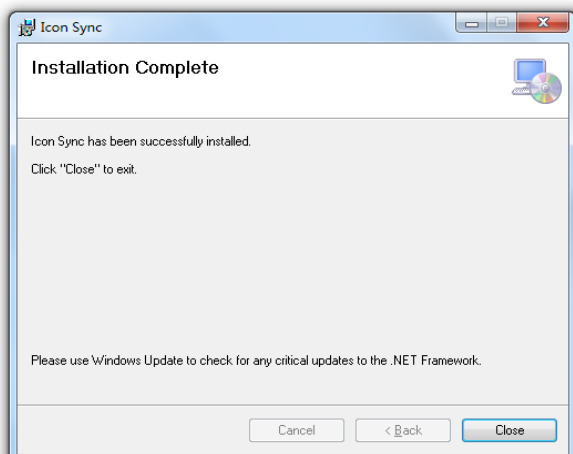
(3) Click "Next" to continue.



(4) Click "Next" to continue.



(5) Click "Close", installation completed.



(6) Open "Icon Sync" in the desktop or start menu to synchronize.